

What's in the Box?

PART NO.	QTY	DESCRIPTION
SMCCV2DVIS	1	NTSC/PAL to DVI/VGA active Converter
Power Supply	1	PS5VDC2A
User Manual	1	

Technical Specifications

VIDEO	
Input Format	NTSC/PAL/SECAM
Output Formats	(1) NTSC/PAL/SECAM, (1) VGA, (1) DVI-D
Resolution	800 x 600, 1024 x 768, up to 1280 x 1024@60Hz
Input Interface	(1) BNC Female
Output Interface	(1) BNC Female, (1) HD-15 Female, (1) DVI-D Single-link Female

OTHER	
Power	External 5VDC2A
Dimensions	5.25"W x 1.375"H x 3.375"D
Weight	0.45 lbs.
Approvals	Device: CE, ROHS Power Supply: C-UL US, CE
Working Temp.	32 to 122°F (0 to 50 °C)
Working Humidity	Up to 85% RH (no condensation)
Storage Temp.	-4 to 149 °F (-20 to 65 °C)
Storage Humidity	Up to 90% RH (no condensation)



SMCCV2DVI Front



SMCCV2DVI Rear

© Copyright 2010 Smart-AVI, All Rights Reserved

NOTICE

The information contained in this document is subject to change without notice. Smart-AVI makes no warranty of any kind with regard to this material, including but not limited to, implied warranties of merchantability and fitness for any particular purpose.

Smart-AVI will not be liable for errors contained herein or for incidental or consequential damages in connection with the furnishing, performance or use of this material.

No part of this document may be photocopied, reproduced or translated into another language without prior written consent from Smart-AVI.

For more information, visit www.smartavi.com.

Smart-AVI
SMART AUDIO VIDEO INNOVATION

Installation Manual

SMCCV2DVI NTSC/PAL to VGA/DVI-D Scaler



VGA to DVI-D Converter

Smart-AVI
SMART AUDIO VIDEO INNOVATION

SmartAVI, Inc. / Twitter: smartavi
2840 N. Naomi Ave. Burbank, CA 91504
Tel: (818) 565-0011 Fax: (818) 565-0020
<http://www.SmartAVI.com>

www.smartavi.com

Introduction

The SMCCV2DVI allows the output of a NTSC/PAL/SECAM to be converted into both VGA and DVI-D outputs. The device also has a local BNC output for a local display. It is an ideal solution for converting older coaxial output (VCRs, Surveillance cameras, etc.) into formats that allow a VGA monitor or HDTV to be connected. The output signal can be tuned for best quality with an on-screen menu.

Features

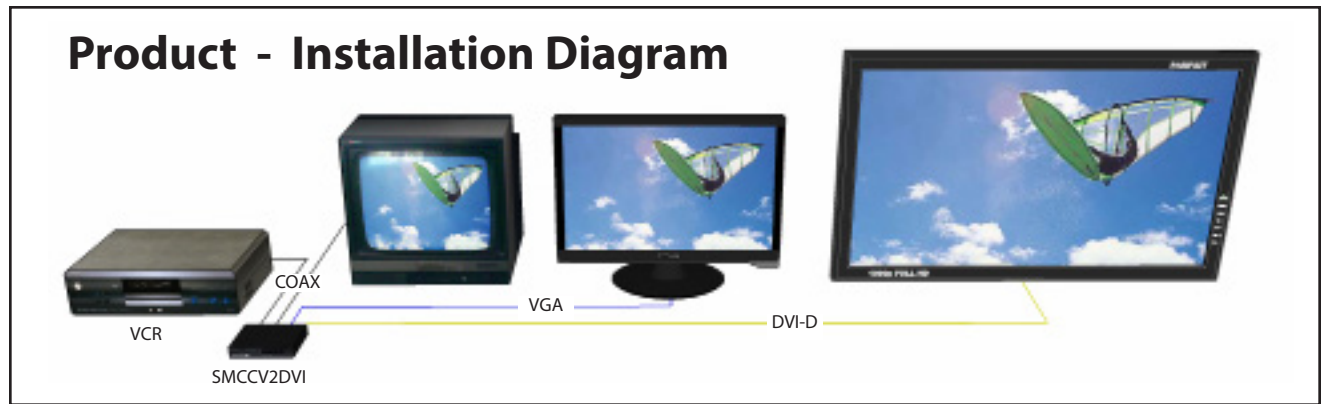
- Specially designed to display video on VGA monitors, LCD color monitors
- Accepts NTSC or PAL Composite video inputs via BNC, and converts to VGA, and DVI-D output
- Supports NTSC, PAL video system
- Input video system 50 to 60Hz frame rate detection (NTSC/PAL)
- Multiple output mode enabled : 800 x 600, 1024 x 768, up to 1280 x 1024 @ 60 Hz
- Frequency output: 60 Hz, 75 Hz, 85 Hz
- On screen display function: Contrast, Brightness, Color, Tint, Features, Resolution
- Built in ESD protection
- Built in video auto gain control for good quality picture

Applications

- Security Environments
- Home Theater Integration
- Restaurants and Bars
- Information Kiosks/Displays

Installation

1. Turn off the video source device and the displays.
2. Connect a coaxial cable to the output device and to the input port (BNC) on the SMCCV2DVI.
3. Connect the display to the VGA or DVI output on the SMCCV2DVI.
4. Connect a local monitor via COAX (optional).
5. Connect the power cord to the SMCCV2DVI.
6. Power on the output device and the display.



Using the On-screen Display

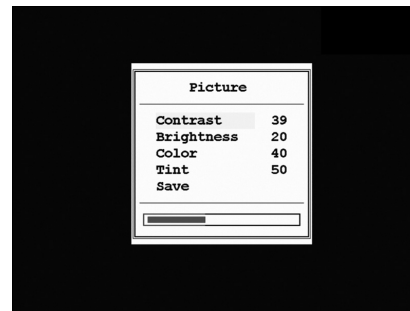
To adjust the settings for the output signal, use the buttons on the front of the SMCCV2DVI.

To display the main menu, press the SELECT button.



MAIN MENU

The main menu has three options: Picture, Features and Resolution. To cycle through the main menu options, use the arrow buttons. To select an option from the main menu, press the SELECT button.



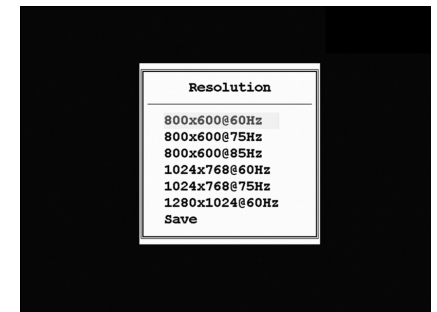
PICTURE MENU

The Picture menu has 5 options: Contrast, Brightness, Color, Tint and Save. To cycle through the Picture menu options, use the SELECT button. To change an option from the Picture menu, use the arrow buttons. To save the Picture settings, select Save and press either arrow button.



FEATURE MENU

The Feature menu has 5 options: OSD Mode, Sharpness, Motion, Motion Value and Save. To cycle through the Feature menu options, use the SELECT button. To change an option from the Features menu, use the arrow buttons. To save the Feature settings, select Save and press either arrow button.



RESOLUTION MENU

The Resolution menu has 7 options: 800x600@60Hz, 800x600@75Hz, 800x600@85Hz, 1024x768@60Hz, 1024x768@75Hz, 1280x1024@60Hz and Save. To cycle through the Resolution menu options, use the SELECT button. To change an option from the Resolution menu, use the arrow buttons. To save the Resolution settings, select Save and press either arrow button.