

DVR 16x16

DVI-D 16x16 Matrix Switcher



The DVR 16x16 allows you to display content from any 16 computers on any 16 screens independently

FEATURES

- Supports up to 16 DVI sources
- Increases productivity by providing access to 16 computers from 16 workstations
- 16x16 non-blocking, single-link DVI matrix switch.
- Supports DVI operation at the maximum TMDS rate of 2x1.65 Gb/s
- Supports resolutions up to 1080p, 2K and 1920x1200.
- DVI transmission over 30 feet at the highest TMDS rate of 1.65 Gb/s
- Control from either front panel or RS-232
- Available IR Remote control using RC5 code
- EDID learning for the support of any DVI display device
- Built in default EDID configuration tables for both PC and Mac
- Each input can be independently connected to any or all outputs
- Optional TCP/IP control
- Advanced EDID learning technology
- Supports up to 16 EDID
- Digital video equalizer for long cables



OVERVIEW

The DVR 16x16 DVI Matrix provides an easy and dynamic approach to creating up to 16 computer stations, each with the ability of accessing any one of the CPUs or displays instantly either directly or remotely, using RS-232 commands. The Matrix is controlled by Windows®-based software that is easy to understand and simple to use, a cornerstone of all SmartAVI products.

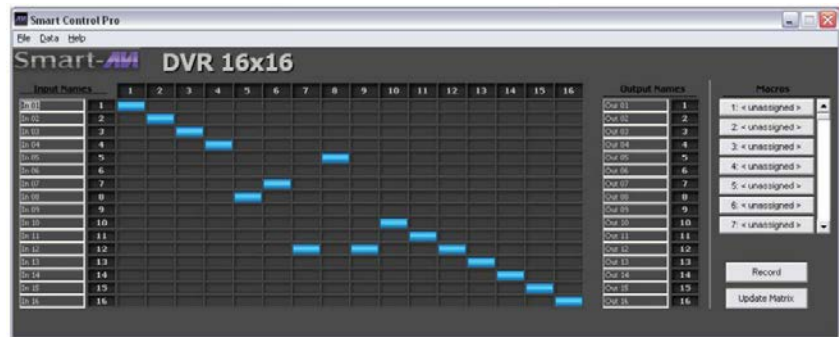
The DVR 16x16 provides single-link, DVI-D operation at the maximum TMDS rate of 2x1.65 Gbps at resolutions up to 1920x1200. The DVI-D signals can be transmitted through 30 feet of copper at the maximum TMDS rate on both the input and output sides of the switch.

CONTROL THE MATRIX

SmartAVI offers three ways to control the DVI router: through Windows® software, TCP/IP and IR.

SOFTWARE SETUP

Setting up the entire matrix configuration settings with presets (macro) is straight forward using SmartControl Software. Route multiple presets with one command.



APPLICATIONS

ACCESS: Enables easy access to multiple servers in various locations. Facilitates data sharing among departments.

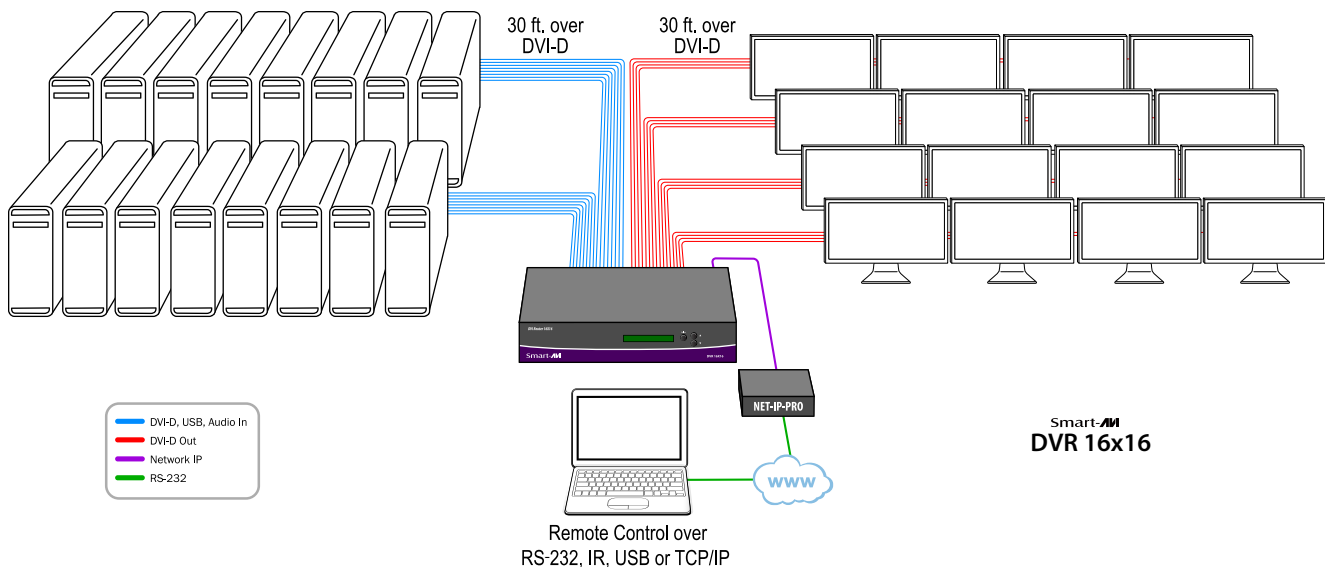
SECURITY: Safeguards the servers by storing them in a secure and climate controlled environment while still providing access from the production floor

SAVINGS: Saves in equipment costs, physical space and utilities expense.

PRODUCTIVITY: Increases productivity by facilitating testing and performance evaluation of software and equipment, on multiple servers, from a single keyboard mouse and monitor station.

MULTIMEDIA PRESENTATIONS: Can be used in multimedia presentations, where the information is transmitted from various computers.

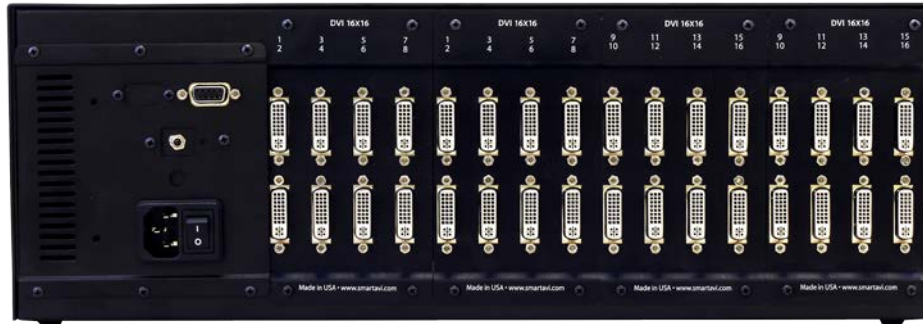
APPLICATION DIAGRAM



SPECIFICATIONS



DVR 16x16 Front



DVR 16x16 Back

VIDEO

Single Link	DVI-D
Resolution	1920x1200
Pixel Clock	165 MHz (Max)
Video In	DVI-D

CONNECTORS

DVI in	16 DVI-I 29 pin female
DVI out	16 DVI-I 29 pin female
RS-232	DB9F, 9600 bps for control Software flow control

CONTROLS

Front panel	Keyboard 2x8 for easy switches and setup
Software	SmartControl windows Gui via RS-232
LCD	4x40 LCD Display

POWER

Internal Adapter	100-240 VAC, 50-60 Hz, 60 Watts
------------------	---------------------------------

OTHER

Dimensions	19W x 5.25H (3U) x 7D in
Approvals	CE, ROHS Compliant
Smart Control	Software windows based GUI
Ethernet	Compatible with SMTCP
Protocol	RS232 9600bps, software flow control easy integration with Crestron, AMX and other

ORDERING INFORMATION

Part No.	Description
DVR16X16S	DVI-D 16x16 Router: Includes: [DVR16X16 (SM-CSW) & (CCPWR06)]
NET-IP-PROS	TCP/IP Control for any SmartAVI Matrix/Switch. Includes: [NET-IP-PRO, CCRS232MM06, PS5VD2A-WLLMNT-Z]



Designed and Manufactured in the USA

www.smartavi.com

Tel: 800.AVI.2131 • 818.503.6200 • 11651
Vanowen St. North Hollywood, CA. 91605

Smart-AVI
SMART AUDIO VIDEO INNOVATION