

HDR-UHD-80X80

80X80 ULTRA HD (4K/60HZ) SEAMLESS MATRIX



**MATRIX SOLUTION WITH 4K FULL UHD INPUTS AND OUTPUTS,
AN INTEGRATED CONVERTER AND SCALER**

FEATURES

- Supports UHD 4K/60Hz, 4K/30Hz and 1080p/60Hz on both inputs and outputs
- HDMI 2.0 input
- Seamless switching
- Control via IP, RS232 and the front panel
- Windows GUI allows unlimited customization
- Integrated scaler can convert any resolution to UHD
- Complete hardware solution
- Plug-and-play ready
- Unlimited Layouts

APPLICATIONS

- Corporate or Educational Presentations
- Airport Installations
- Digital Signage
- Dealer Rooms
- Control Rooms
- Shopping Centers
- Security
- Point-of-Sale Retail
- Entertainment Venues
- Corporate Lobbies
- Restaurants



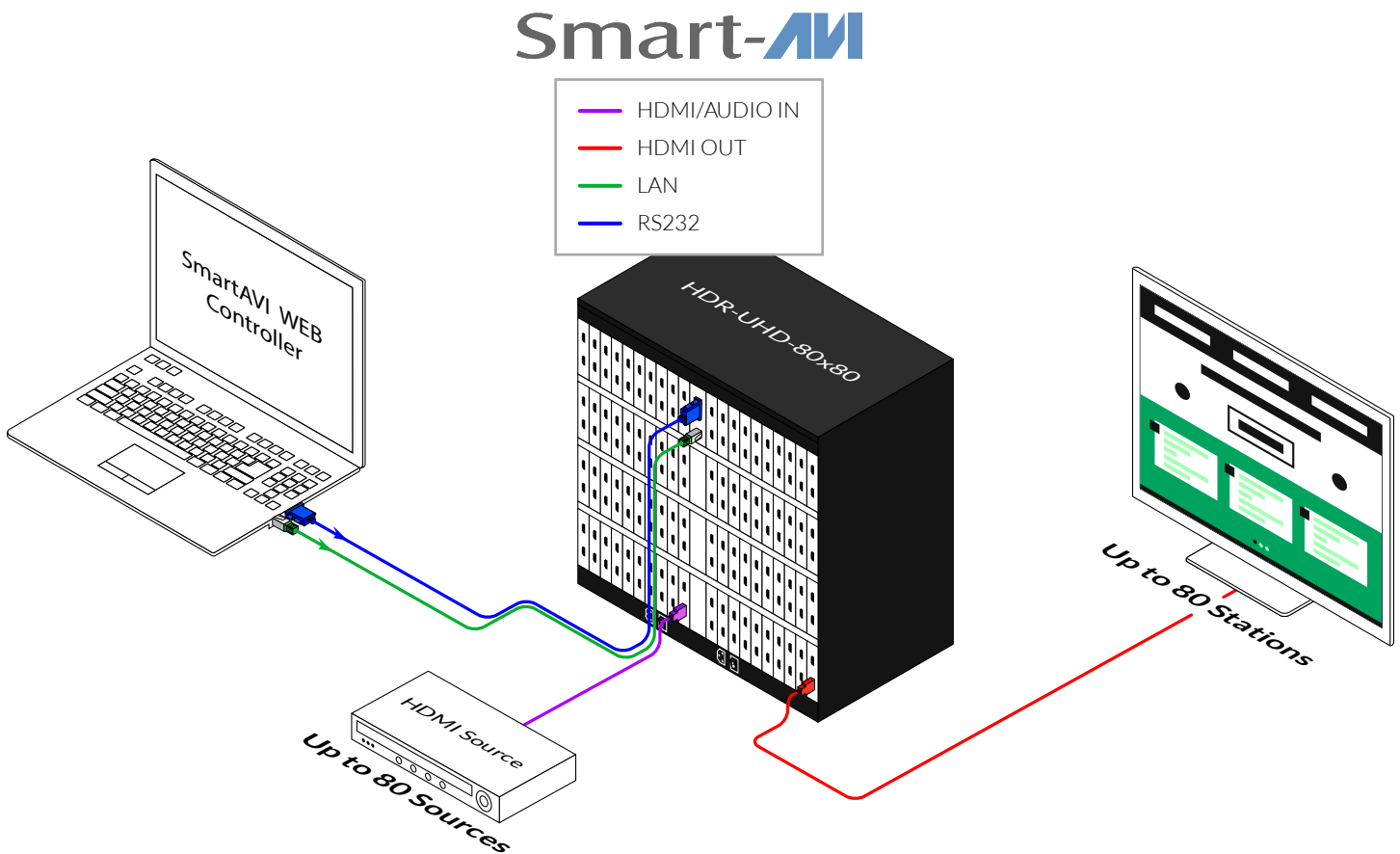
Designed and Manufactured in the USA

OVERVIEW

The HDR-UHD-80X80 is a matrix switch with up to 80 full UHD inputs and 80 outputs, an integrated converter and scaler. Compact, plug-and-play, and excellent for mid-sized displays between 80 screens with resolutions up to 4K (3840x2160 @ 24 Hz/25 Hz/30 Hz/50 Hz/60 Hz) Full UHD.

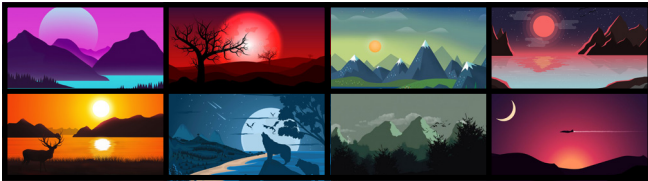
The HDR-UHD-80X80 is simple to control, outfitted with easy front-panel buttons and optional RS232 control. The HDR-UHD-80X80 comes with SmartAVI's intuitive HDR-UHD Manager software absolutely free! HDR-UHD Manager software lets users manually create and adjust their ideal displays using simple click-and-drag operation: it's fun and great for users of any technical skill level! Users can choose from a number of great pre-configured screen modes as well, displaying content in various layouts with the press of a button. The HDR-UHD-80X80 also features TCP/IP web control for LAN-connected units, so users can control the contents of the display from the comfort of a PC workstation.

Its compact design and powerful processing power make the HDR-UHD-80X80 the perfect solution for any installation. Plug-and-play, the HDR-UHD-80X80 is immediately ready for use as soon as it is connected to an AV set-up: no additional drivers or installers required. Better still, its exceptional hardware makes for stunning displays in environments like retail spaces, educational facilities, conference rooms, command centers, etc.



AVAILABLE CONFIGURATIONS

It is easy to create different configurations or modes that are simple to navigate through with the HDR-UHD-80X80. There are endless possibilities. Creating and switching between display modes is simple. Front panel buttons, on-screen-display, RS232, and TCP/IP can be used to switch between modes at will. The HDR-UHD-80X80 presents nearly unlimited configuration possibilities.

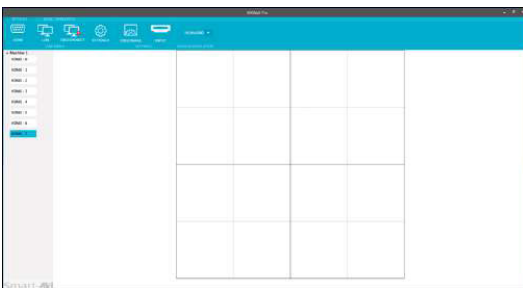


INDIVIDUAL MODE

Users can route individual input images to each display individually.

HDR-UHD MANAGER SOFTWARE

The HDR-UHD-80X80 also comes with SmartAVI's intuitive HDR-UHD Manager software, which allows users to create amazing video wall displays in minutes. Its click-and-drag operation and simple layout ensure managing video walls is easy and effective every time!

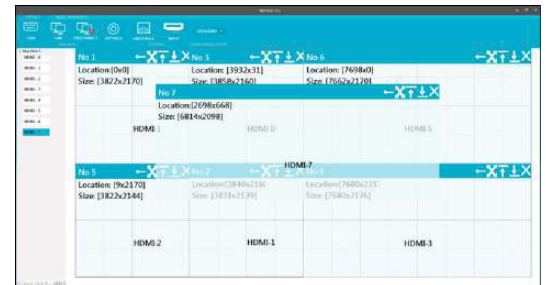


EASY TO USE

The HDR-UHD Manager software features a streamlined layout that keeps things simple and clear. Our intuitive menus and settings interface ensure set-ups always are easy and stress-free. Choose from settings like aspect-ratio, rows, columns, video sources, and more! Adjust resolutions, scaling, and active monitors on the fly. Not happy with your current configuration? Just clear the workspace and start fresh: it's that simple!

FULLY CUSTOMIZABLE

Take your pick of any of our versatile display modes. Select any screen and input the source you would prefer. Even multiple video sources can share a single screen with INDIVIDUAL and QUAD display modes. The possibilities are as endless as your creative potential!



FRONT AND BACK



HDR-UHD-80X80
Front panel



HDR-UHD-80X80
Back panel

TECHNICAL SPECIFICATIONS

VIDEO	
Video Amplifier Bandwidth	18 Gbps
Input Video Signal	Video (TMDS) 0.4~1.0Vpp
Input DDC Signal	5 volts
Compliances	HDMI 2.0, HDCP 2.2
Input Resolutions	3840 x 2160 @ 24 Hz / 25 Hz / 30 Hz / 50 Hz / 60 Hz
Output Resolutions	3840 x 2160 @ 24 Hz / 25 Hz / 30 Hz / 50 Hz / 60 Hz; 1080p @ 60 Hz
Video Type	HDMI2.0
Input Interface	(80) HDMI 19-pin (female)
Output Interface	(80) HDMI 19-pin (female)

AUDIO	
Format	Stereo
Input Interface	(80) HDMI2.0 (Female)
Output Interface	(80) 3.5mm (Female)

CONTROL	
Front Panel	Tacticle Switches
RS-232	DB9 connector, Baud Rate 115200
TCP/IP	RJ45, UDP telnet

OTHER	
Working Temperature	0°C~+40°C
Storage Humidity	20%~90%
Weight	24.45 lbs
Dimensions	17" W x 7 1/8" H x 15" D
Power Supply	50/60Hz, 110-240 VAC
Consumption	100W

PART NO.	DESCRIPTION
HDR-UHD-80X80-S	80x80 4K/60Hz Video Matrix Switch. Includes: [HDR-UHD-80X80 and CCPWR06]

www.smartavi.com

Tel: (888) 994-7427 • (702) 800-0005
2455 W Cheyenne Ave, Suite 112
North Las Vegas, NV 89032

Smart-AVI
SMART AUDIO VIDEO INNOVATION