

EKS-1602-PRO

ENTERPRISE 16 PORT CAT5 KVM SWITCH
WITH ONE LOCAL USER AND REMOTE IP USER



THE EKS1602PRO ENABLES ONE LOCAL AND ONE REMOTE USER TO ACCESS AND CONTROL OF UP TO 32 SERVERS. THESE RACK-MOUNTABLE, 1U SIZED SWITCHES FEATURE KVM OVER CAT5 TECHNOLOGY THAT DIRECTLY CONNECTS THE SWITCH TO EACH COMPUTER IN THE SERVER ROOM, ELIMINATING CABLE CLUTTER AND PROVIDING UP TO 150FT OF DISTANCE BETWEEN SERVER AND SWITCH. THE EKS1602PRO HAS A BUILT-IN WEB SERVER ENABLING REMOTE USERS SEAMLESS ACCESS TO TARGET SERVERS VIA ANY BROWSER.

KEY FEATURES

- **Browser-Based KVM Over IP (SmartEKS)** Directly manage systems over IP networks via any browser, with no need for driver or software installations, ensuring ease of access and simplicity.
- **Versatile Dual-User Support** Supports two simultaneous users and controls up to 16 servers or devices. Includes 3 convenient adapters for HDMI, DP, and VGA video connections, offering broad compatibility and flexible server management.
- **On-Screen Display (OSD) and Hotkeys** Simplify navigation and control with an intuitive OSD and customizable hotkeys, allowing for quick switching and easy access to connected devices.
- **Full KM and Video Emulation** Ensures continuous keyboard and mouse connectivity and maintains video integrity during switching, providing users with a seamless experience across all connected servers.
- **Extended Connectivity** Enables connection of servers/PCs up to 150ft away using standard CAT5 cables, facilitating remote setup flexibility and expansive network configurations
- **Full HD Video Support** Delivers crisp FHD video output, ensuring clear and detailed visuals for efficient remote management.
- **Universal Compatibility** Works seamlessly with all operating systems, including Windows and Unix-based platforms, accommodating diverse IT infrastructures.

APPLICATIONS

- Data Center Server Management
- Remote Server Administration
- Network Operations Control
- IT Infrastructure Management
- Lab and Test Environments
- Broadcast and Media Control
- Cloud Services Maintenance
- High-Performance Computing Management
- Security and Surveillance Centers



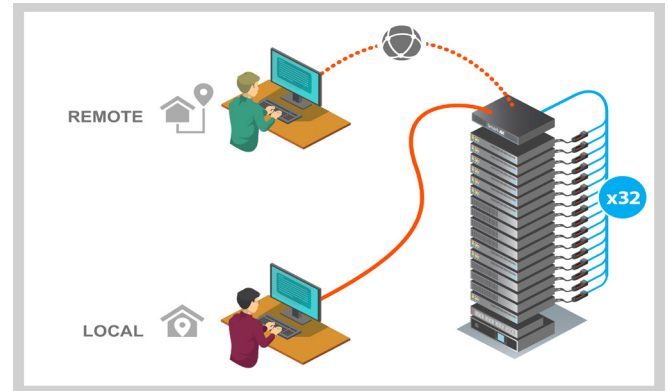
Designed and Manufactured in the USA

OVERVIEW

ELEVATING IT MANAGEMENT

The EKS is an enterprise class KVM over IP switch that provides 2 users (2 local or 1 local and 1 remote) with BIOS level remote management of 16 (or 32) servers in a single switch. The EKS supports a wide array of video interfaces, including HDMI, DisplayPort and VGA, and stereo audio up to 150 feet. The EKS Series is at the forefront of KVM technology for small to mid-sized businesses.

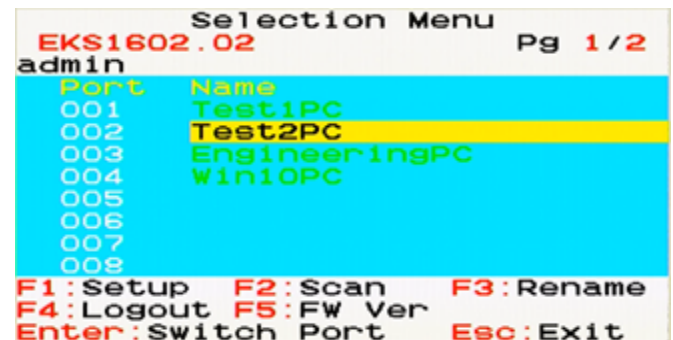
- **Local and Remote Management:** The EKS Series allows for 2 local users to control operations, while the PRO models feature the SmartEKS Remote KVM system for unparalleled remote access capabilities.
- **Direct Control:** Utilize hotkey functions and on-screen display for effortless configuration and smooth operation, ensuring immediate access to connected devices. The EKS was created for server rooms, control rooms, and Enterprise Data Centers.



FEATURE-RICH AND USER-FRIENDLY

The EKS Series stands out for its comprehensive feature set and user-centric design, making IT management more intuitive and secure.

- **Effortless Configuration and Control:** Hotkey functions and an on-screen display (OSD) facilitate straightforward device management and switching.
- **Real-Time Monitoring:** Front panel LEDs and the OSD interface enable fast and easy access to connected computers, with the option to label them for quick identification.
- **Secure Access:** Robust password security mechanisms limit access to authorized users, protecting your IT infrastructure.



SMARTEKS - KVM-OVER-IP ON YOUR BROWSER

The PRO models of the EKS Series redefine remote server management, offering BIOS-level access from any location via our proprietary SmartEKS Remote KVM system. This feature ensures a seamless and responsive user experience, just like being directly in front of the server. All this, straight from your browser with no need to download any software or drivers.

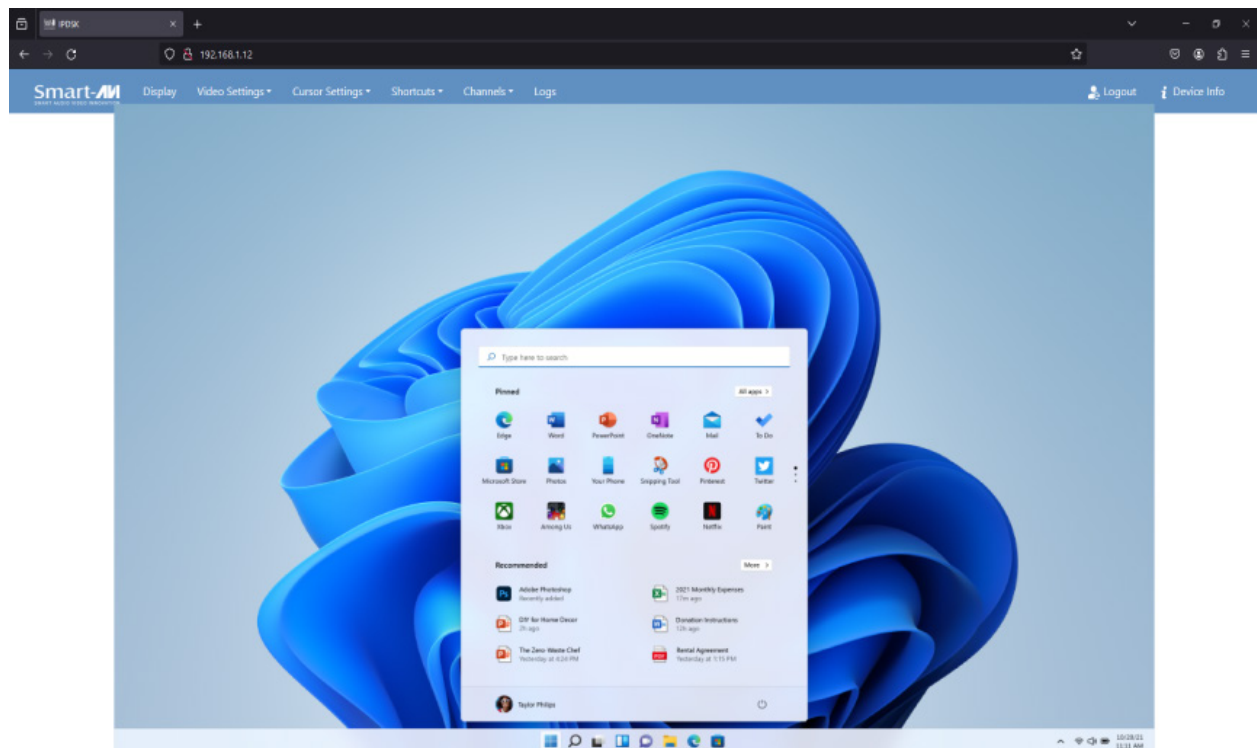
No Software or Drivers Needed: Remote access to any Server connected to the KVM directly from your browser with no need to download any extra software or drivers.

BIOS-Level Remote Access: SmartEKS enables detailed system control from anywhere, providing the flexibility and immediacy needed for critical tasks.

Low Latency Operation: Designed to minimize delays, SmartEKS ensures efficient and comfortable remote management.

Customizable User Experience: Tailor your remote sessions with various configuration options, aligning with specific workflow requirements.

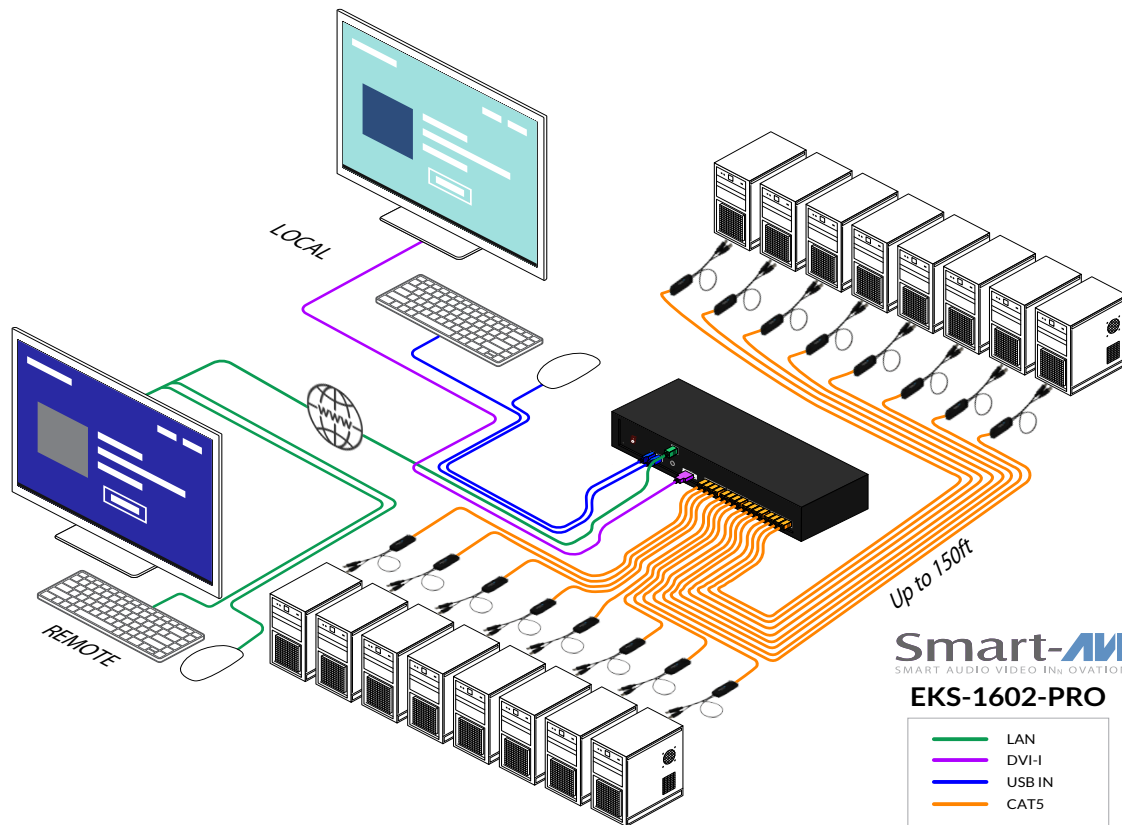
High-Quality Visuals: Full HD resolution support maintains visual clarity during remote operations, ensuring every detail is precisely captured.



DESIGNED FOR SCALABILITY AND PERFORMANCE

With its adaptable architecture, the EKS Series is built to accommodate evolving IT demands, offering scalability and high performance.

- **Extensive Server Management:** Manage up to 16 servers directly, with cascading options to extend control and monitor hundreds of servers seamlessly.
- **Future-Proof Technology:** The EKS Series is firmware upgradeable and rack mountable, ready to evolve with your IT environment.



EKS SERIES FEATURES AND BENEFITS

- **Versatile Server Connectivity:** Supports HDMI, DisplayPort, and stereo audio connections, accommodating a wide range of server types.
- **Expansive Control Range:** Directly connect and manage up to 16 servers within 150 feet, with cascading options for broader control.



FRONT AND BACK IMAGES



EKS-1602-PRO Front



EKS-1602-PRO Back



DP CAT5 Adapter



HDMI CAT5 Adapter



VGA CAT5 Adapter

TECHNICAL SPECIFICATIONS

VIDEO	
Video	DVI-I Female
Video Resolution	Up to 1920 x 1200 @75Hz (VGA)/1920 x 1080@60Hz (DVI)
CONTROL	
Console Connections	2 Total - 1x Local 1x Remote
Computer Connections	16
Console Selection	Hot-Key and OSD menu
KVM Port	16 x RJ45 Female
Operation Indication	Online (White), Selected (Green), Offline 16 x Color LED
USB	
Keyboard	1 x USB Type A Female (white)
Mouse	1 x USB Type A Female (white)

OTHER	
Firmware Upgrade	Micro-USB Female
Reset Button	Tact Switch
Power	AC Socket with Light Power Switch
Power-On (White)	Color LED Indicator
Maximum Input Power Rating	AC Power 100V~240V/ 50~60Hz.
Operating Temp.	0-50°C
Storage Temp.	-20°C; -60°C
Humidity	5-90% RH, Non-condensing
Housing	Metal
Weight	4.43 lbs.
Dimension (L x W x H)	17.4 x 5.9 x 1.7 in.
Safety	CE/FCC

PART NO.	ORDERING INFORMATION
EKS-1602-PRO	Enterprise cat5 KVM Switch with kvm-over-ip with 16 Ports and 2 Users